

HEART HILL VINEYARD

WILLOW CREEK AVA, PASO ROBLES

Named for the naturally occurring grove of oak trees in the shape of a heart facing 46 West, Heart Hill Vineyard experiences a warm climate, with cooling afternoon ocean breezes sailing through the break in the Santa Lucia Mountain Range known as the “Templeton Gap”. The soil profile at Heart Hill is a prime example of the vast diversity found across the west side of Paso Robles. Although neighboring vineyards have streaks of calcareous soils, Heart Hill Vineyard is comprised of steep, hillside plantings on rocky slopes of siliceous shale. In this type of soil, vines must grow deep and powerful root systems in search of water.

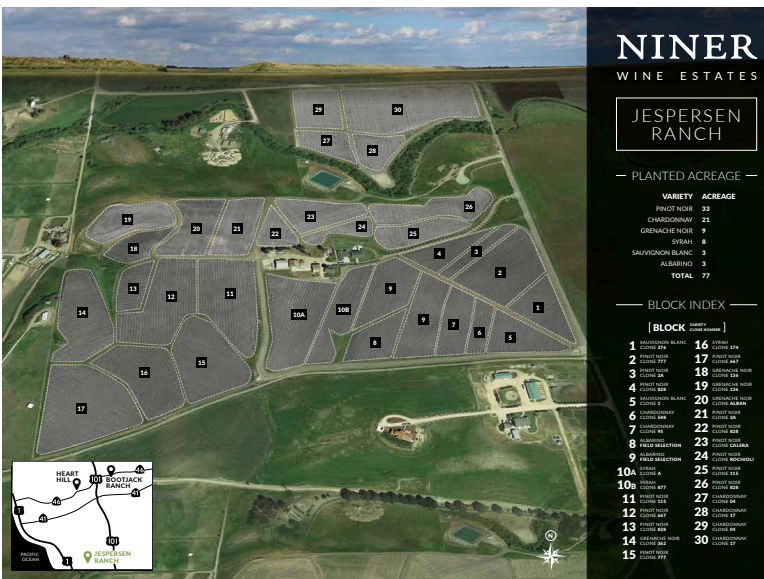
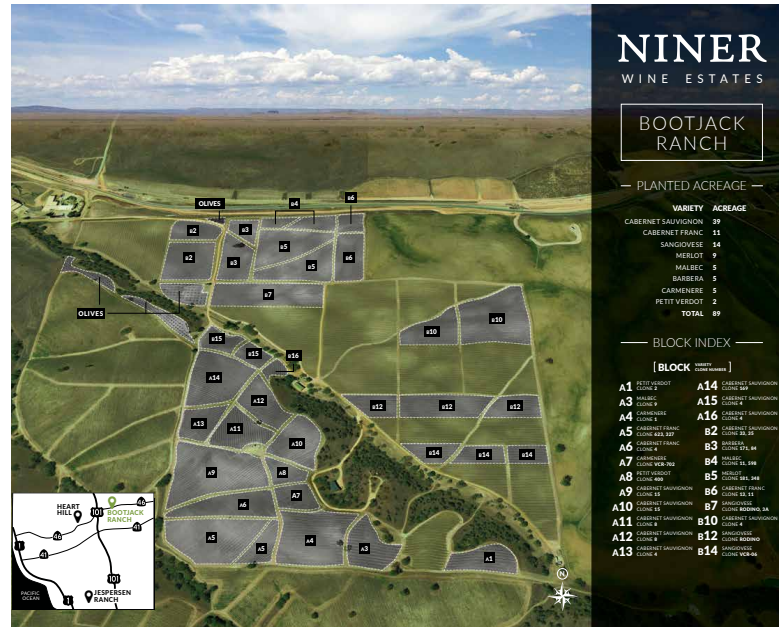
The land itself has a history as rich as the wines it produces, with a story that stretches over 100 years. The property was originally part of a 700 acre ranch owned by Claude and Richard Booker. The Bookers were hardworking, community oriented brothers who were hallmarks of Paso Robles and strove to preserve the land they worked on. We purchased the land in 2003 and planted the original 46 acres in two stages: the slopes surrounding the Heart in 2007; and the remaining blocks on the north-end of the vineyard in 2010. In 2016 we purchased the neighboring property, doubling the size of our property at Heart Hill. We began planting an additional 33 acres on this portion of the property in 2020.

BOOTJACK RANCH

GENESEO DISTRICT, PASO ROBLES

Sprawled out on the eastern side of Paso Robles, Bootjack Ranch exemplifies the town’s strong, independent spirit. Once an ancient seabed, the vineyard has two distinct sections: flats of calcareous soils and hills of well-drained, sandy loam. The growing season sees daytime temperatures in the 80’s and 90’s with dramatic drops of up to 40 degrees in temperature at night. Both the vines and the scattered olive groves thrive in this climate. Over time we’ve learned that grapes from this vineyard are better left unconstrained, which results in wines that are driven by the soil and the sun instead of the heavy hand of the winemaker. The wines from Bootjack Ranch have bright, fresh fruit expression and strong tannin.

Bootjack Ranch is the very first vineyard we purchased. Since we bought the property in early 1999, we have expanded it with new plantings and graftings in 1999, 2001, 2005 and 2010. A range of varietals have proven to do well at Bootjack Ranch including Cabernet Sauvignon, Sangiovese and Malbec. We also have smaller plantings of Barbara, Carmenera, and Merlot.



JESPERSEN RANCH

EDNA VALLEY

Nestled into the rolling hills of the northwest corner of Edna Valley, Jespersen Ranch lies four miles from the Pacific Ocean, and derives much of its personality from the coastal influence. The growing season is long and cool with average daytime temperatures in the 70s balanced by early morning fog and mid-afternoon ocean breezes. The soils at Jespersen Ranch are very different from Paso Robles with dark, organic clay topsoil and a sandy subsoil. The result is well-drained vigorous soils where the challenge in growing high quality grapes is controlling abundant vigor.

We purchased the vineyard in 2011 and it is located thirty miles south of Paso Robles in the Edna Valley AVA. The vineyard was originally planted by Andy Blodgett, who had a passion for the site and the vision to plant it the right way from the beginning. Andy Blodgett planted the original 46 acres in 2006 and 2007 and we planted an additional 31 acres in 2012. The undisputed stars and largest acreage plantings at Jespersen Ranch are Pinot Noir and Chardonnay.